

Corner Mouldings for MoonBase and LaunchPad

Assembly Instructions



Corner Mouldings

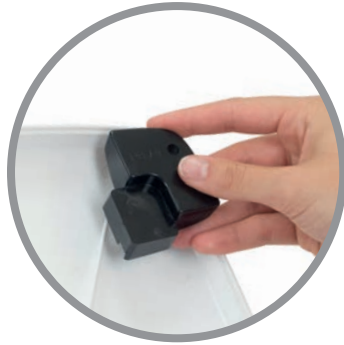
1



Carefully remove all four existing iPad 2/3/4 black corner inserts from the locating pins within the enclosure.

PLEASE retain for future use.

2



Remove the four iPad Air inserts from their packaging. Position holes of iPad Air inserts over locating pins and gently push-fit into enclosure

3

The enclosure is now ready to accept the iPad Air or iPad Air 2.

